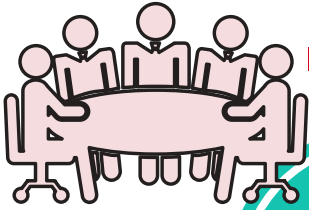

PARTNERSHIP VS DOMINATOR



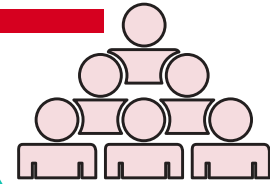
Partnership System

*Democratic &
economically equitable
structure*

*Equal valuing of males &
females, & high regard for
stereotypically feminine
values*

*Mutual Respect & low
degree of violence*

*Beliefs & stories that
give high value to
empathetic & caring
relations*



Dominator System

*Authoritarian &
inequitable social &
economic structure*

*Subordination to women
and "femininity" to men
and "masculinity"*

*High degree of abuse &
violence*

*Beliefs & stories that
justify & idealize
domination & violence*